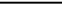


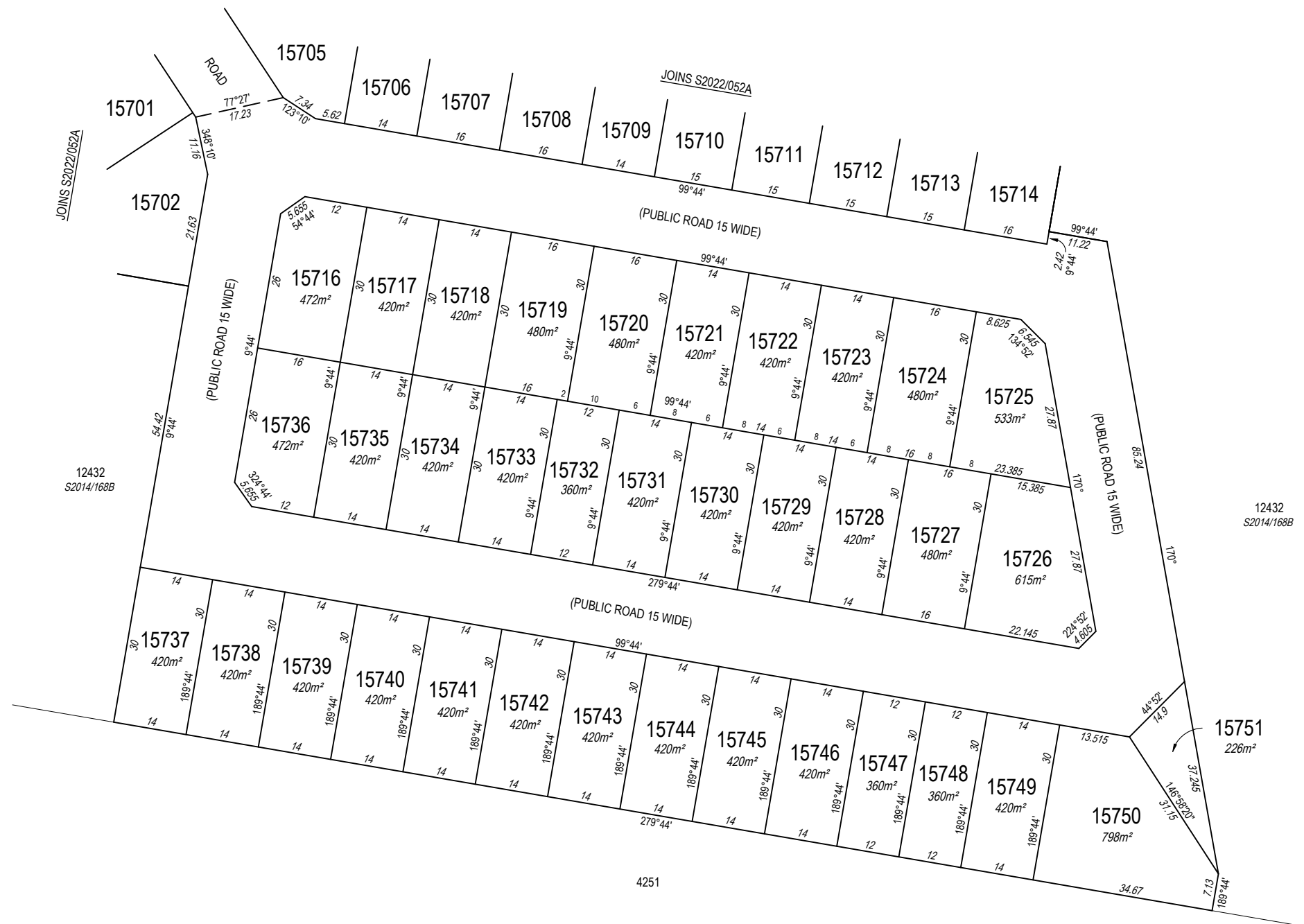


STAGE 4A
PRELIMINARY




All areas and dimensions are subject to survey

<div>I, Keith Leslie Schulz, hereby certify that the survey represented on this plan was carried out by me or under my supervision and was completed on 26/07/2022, and that this survey has been executed in accordance with the Licensed Surveyors Act and the Directions thereunder.</div> <div>Licensed Surveyor</div> <div>Date</div>		<div>AMENDMENTS</div> <table><thead><tr><th>Reference</th><th>Details</th><th>Approved</th><th>Date</th></tr></thead><tbody><tr><td></td><td></td><td></td><td></td></tr></tbody></table>				Reference	Details	Approved	Date					<div>Note</div> <div>Area to be surrendered from Lot 12433 (CLT 2508) is 3.03 ha</div> <div>Public Roads are vested in the City of Palmerston</div> <div>Lot 15303 (Park) is vested in the City of Palmerston</div> <div>Electricity Supply Easements are in favour of the Power and Water Corporation and are to be created by the registration of this plan</div>	<div>Field Book</div> <div>EJA REF: 9512</div>	<div></div> <div>Grid (Palmerston Datum)</div>	<div>LEGEND</div> <div>Concrete Post</div> <div>Concrete Block</div> <div>Peg or Wooden Post</div> <div>Reference Mark</div> <div>Lockspit</div> <div>Fence Post</div>	<div>LOTS 15684 TO 15715</div> <div>TOWN OF PALMERSTON</div>
		Reference	Details	Approved	Date													
<div>Drawn</div> <div>Earl James & Associates</div> <div>26/07/2022</div>	<div>Examined</div> <div>Earl James & Associates</div>	<div>Map Reference</div>	<div>AZIMUTH</div> <div>Assumed from</div> <div>Observed at</div>															
<div> Northern Territory Government</div> <div>Department of Infrastructure, Planning & Logistics</div>	<div>SURVEY APPROVED</div> <div>Surveyor-General</div> <div>Date</div>				<div>Version 1 - survey plan as lodged</div>			<div>SCALE 1:1000 (A3)</div> <div></div> <div>metres</div>	<div>S2022/052A</div> <div>SHEET 1 OF 2</div>									



STAGE 4A
PRELIMINARY

All areas and dimensions are subject to survey

<div>I, Keith Leslie Schulz, hereby certify that the survey represented on this plan was carried out by me or under my supervision and was completed on 26/07/2022, and that this survey has been executed in accordance with the Licensed Surveyors Act and the Directions thereunder.</div> <div>Licensed Surveyor</div> <div>Date</div>		AMENDMENTS				<div>Note</div> <div>Area to be surrendered from Lot 12433 (CLT 2508) is 2.33 ha</div> <div>Public Roads are vested in the City of Palmerston</div> <div>Lot 15303 (Park) is vested in the City of Palmerston</div> <div>Electricity Supply Easements are in favour of the Power and Water Corporation and are to be created by the registration of this plan</div>	<div>Field Book</div> <div>EJA REF: 9512</div> <div>Drawn</div> <div>Earl James & Associates</div> <div>26/07/2022</div> <div>Examined</div> <div>Earl James & Associates</div> <div>Map Reference</div>		<div></div> <div>Grid (Palmerston Datum)</div>	<div>LEGEND</div> <div>Concrete Post</div> <div>Concrete Block</div> <div>Peg or Wooden Post</div> <div>Reference Mark</div> <div>Lockspit</div> <div>Fence Post</div>	<div>LOTS 15716 TO 15751</div> <div>TOWN OF PALMERSTON</div> <div><div>SCALE 1:1000 (A3)</div><div></div></div> <div>S2022/052B</div> <div>SHEET 2 OF 2</div>
		<div>Reference</div> <div>Details</div> <div>Approved</div> <div>Date</div>	<div>Assumed from</div> <div>Observed at</div>	<div>AZIMUTH</div> <div>Assumed from</div> <div>Observed at</div>							
<div> Northern Territory Government</div> <div>Department of Infrastructure, Planning & Logistics</div> <div>SURVEY APPROVED</div> <div>Surveyor-General</div> <div>Date</div>						Version 1 - survey plan as lodged					